



FINE
ART
AUCTION
HOUSE

Heffel

**FINE
CANADIAN ART**

**BEAUX-ARTS
CANADIENS**

SALE WEDNESDAY, NOVEMBER 23, 2016 · 7 PM · TORONTO

BEAUX-ARTS CANADIENS

VENTE AUX ENCHÈRES

mercredi 23 novembre 2016
16h30, Art d'Après-Guerre et Contemporain
19h, Beaux-Arts Canadiens, suivi de la
Collection Peter et Joanne Brown
Design Exchange
The Historic Trading Floor (2e étage)
234 Bay Street, Toronto
Situé à l'intérieur du Centre TD

EXPOSITIONS

Galerie Heffel, Vancouver
2247 rue Granville
du samedi 29 octobre
au mardi 1er novembre de 11h à 18h

Galerie Heffel, Montréal
1840 rue Sherbrooke Ouest
du jeudi 10 novembre
au samedi 12 novembre de 11h à 18h

Design Exchange, Toronto
The Exhibition Hall (3e étage), 234 Bay Street
Situé à l'intérieur du Centre TD
du samedi 19 novembre
au mardi 22 novembre de 10h à 18h
et mercredi 23 novembre de 10h à 12h

GALERIE HEFFEL TORONTO

13 avenue Hazelton, Toronto
Ontario, Canada M5R 2E1
Téléphone 416-961-6505, Télécopieur 416-961-4245
Sans frais 1-800-528-9608
www.heffel.com

FINE CANADIAN ART

AUCTION

Wednesday, November 23, 2016
4:30 PM Post-War & Contemporary Art
7 PM Fine Canadian Art, followed by
The Peter & Joanne Brown Collection
Design Exchange
The Historic Trading Floor (2nd floor)
234 Bay Street, Toronto
Located within TD Centre

PREVIEWS

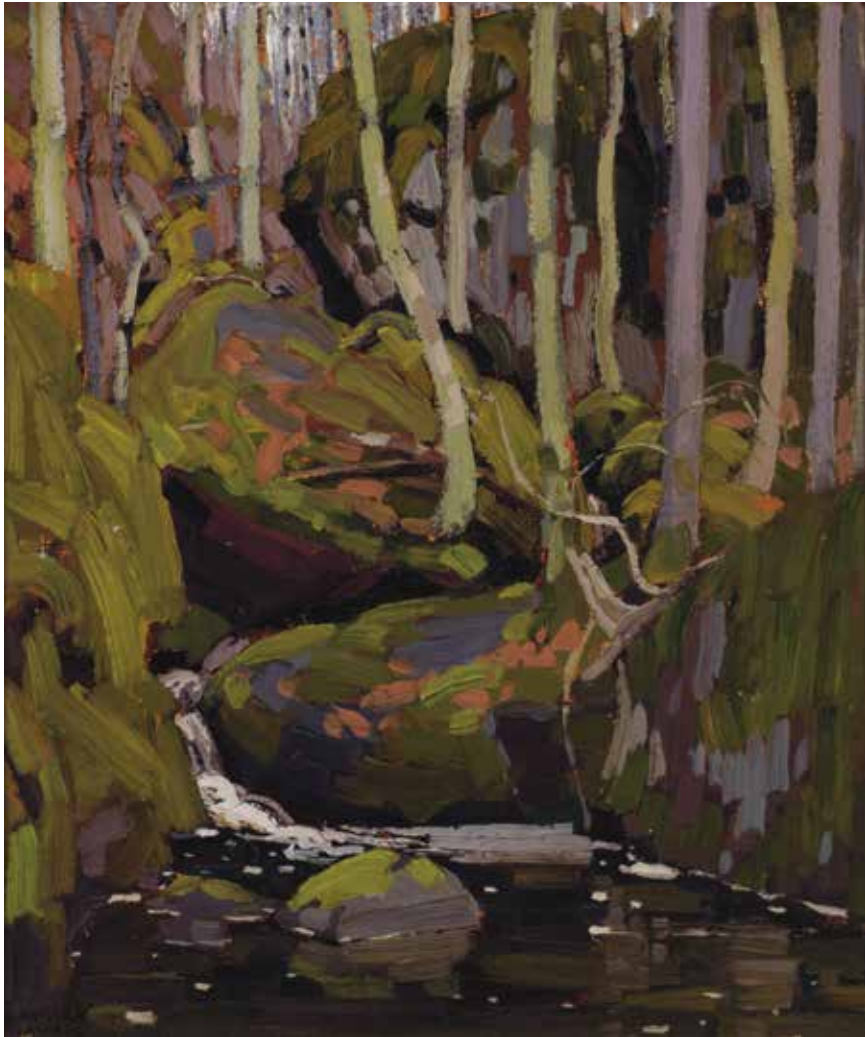
Heffel Gallery, Vancouver
2247 Granville Street
Saturday, October 29 through
Tuesday, November 1, 11 am to 6 pm

Galerie Heffel, Montreal
1840 Rue Sherbrooke Ouest
Thursday, November 10 through
Saturday, November 12, 11 am to 6 pm

Design Exchange, Toronto
The Exhibition Hall (3rd floor), 234 Bay Street
Located within TD Centre
Saturday, November 19 through
Tuesday, November 22, 10 am to 6 pm
Wednesday, November 23, 10 am to noon

HEFFEL GALLERY TORONTO

13 Hazelton Avenue, Toronto
Ontario, Canada M5R 2E1
Tel 416-961-6505, Fax 416-961-4245
Toll Free 1-800-528-9608
www.heffel.com



FRONT COVER/COUVERTURE AVANT:

Lawren Stewart Harris
Mountain Forms

oil on canvas, circa 1926
60 x 70 in, 152.4 x 177.8 cm

ESTIMATE: \$3,000,000 – 5,000,000



ABOVE/CI-DESSUS:

Lawren Stewart Harris
Algoma

oil on board, circa 1918
12 3/4 x 10 1/2 in, 31.4 x 26.7 cm

ESTIMATE: \$200,000 – 300,000

Franklin Carmichael
Storm Over Hills, Cranberry Lake

oil on panel, 1939
10 x 12 in, 25.4 x 30.5 cm

ESTIMATE: \$70,000 – 90,000



Alexander Young (A.Y.) Jackson
A Frozen Lake

oil on panel, 1914
8 ½ x 10 ¾ in, 21.6 x 27 cm
ESTIMATE: \$60,000 – 80,000



Frederick Horsman Varley
Northern Landscape

oil on board, 1938
12 x 15 in, 30.5 x 38.1 cm
ESTIMATE: \$70,000 – 90,000



James Edward Hervey (J.E.H.) MacDonald
Algoma

oil on board, 1920
8 ½ x 10 ½ in, 21.6 x 26.7 cm
ESTIMATE: \$90,000 – 120,000



Lawren Stewart Harris
Sand Lake, Algoma

oil on panel, circa 1921
10 ½ x 13 ¾ in, 26.7 x 34.6 cm
ESTIMATE: \$125,000 – 175,000



Lawren Stewart Harris

Mount Odaray from Lake McArthur / Rocky Mountain Sketch cxxv

oil on board, circa 1926 – 1928

12 x 15 in, 30.5 x 38.1 cm

ESTIMATE: \$500,000 – 700,000



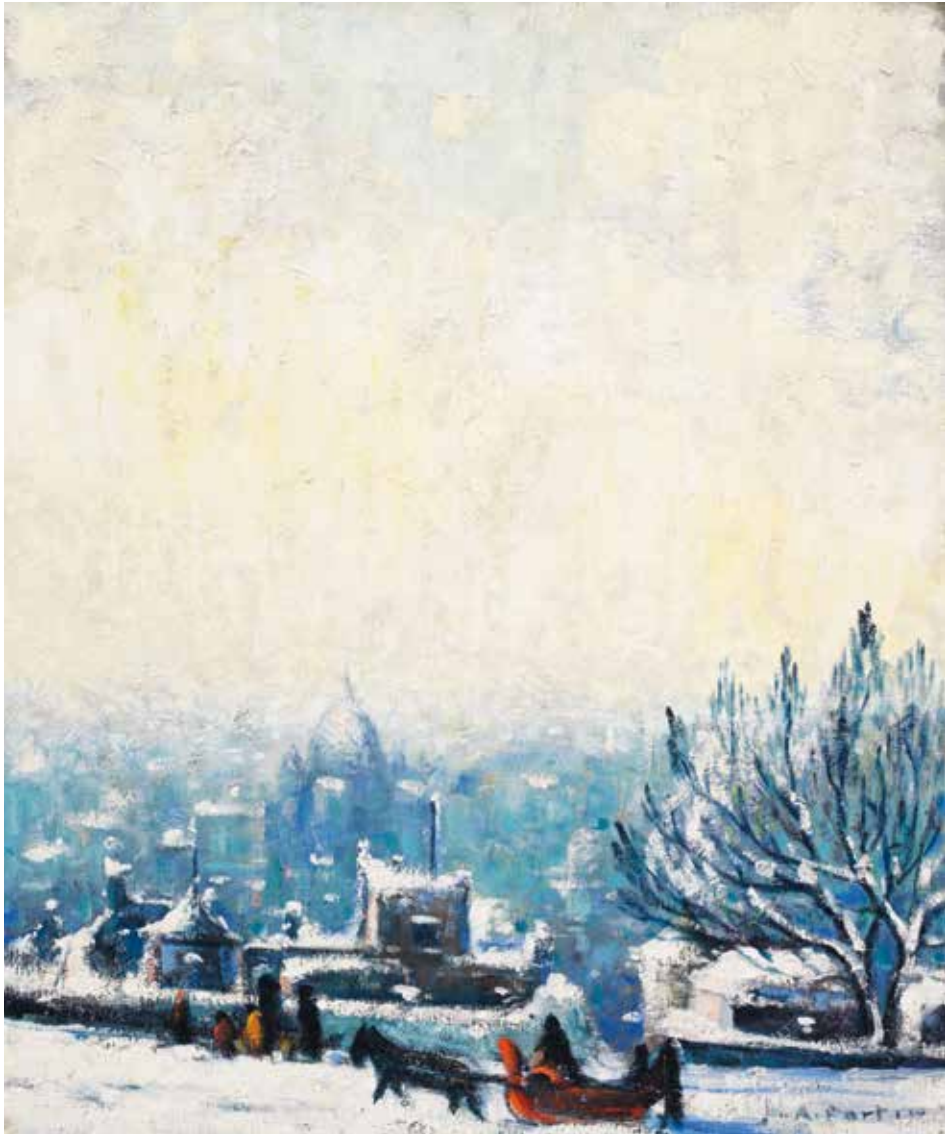
Emily Carr

Arbutus Trees

oil on paper on board, circa 1933

36 x 24 in, 91.4 x 61 cm

ESTIMATE: \$150,000 – 250,000

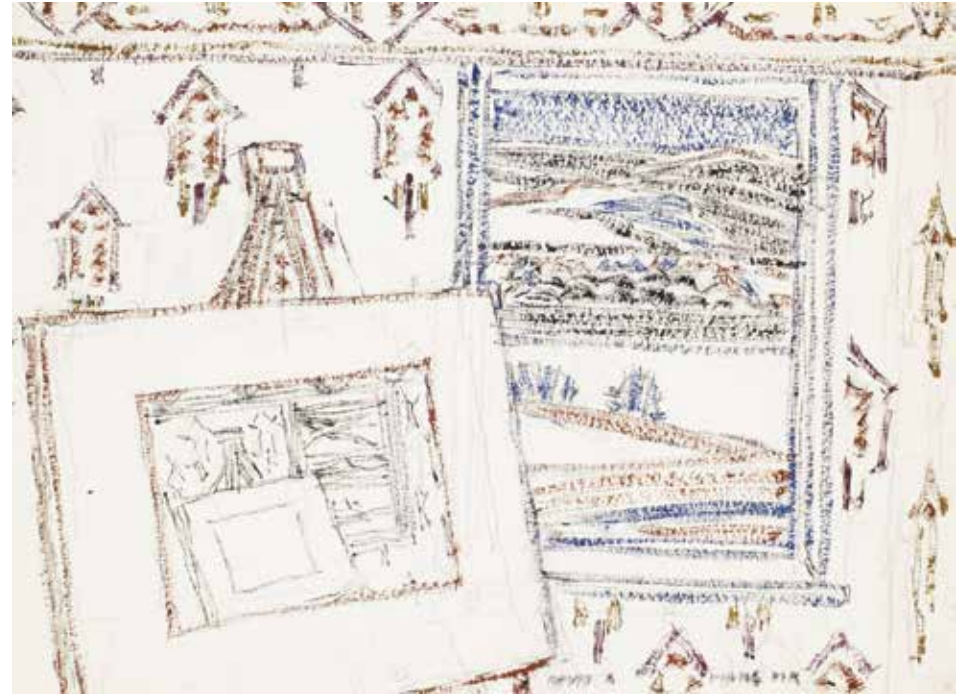


Marc-Aurèle Fortin

View of Montreal from the Sulpician Property, Montreal

oil on canvas, circa 1919
24 x 20 in, 61 x 50.8 cm

ESTIMATE: \$50,000 – 70,000



David Brown Milne

Window and Easel, Mount Riga, New York

watercolour on paper, 1921
11 x 15 ¼ in, 27.9 x 38.7 cm

ESTIMATE: \$20,000 – 30,000



Edwin Headley Holgate
Le poilu

oil on panel, 1918
4 7/8 x 7 in, 12.4 x 17.8 cm
ESTIMATE: \$80,000 – 120,000



Marc-Aurèle de Foy Suzor-Coté
Portrait d'Esdras Cyr

oil on canvas, 1916
15 1/4 x 12 1/4 in, 38.7 x 31.1 cm
ESTIMATE: \$80,000 – 120,000



Helen Galloway McNicoll
The Mother

oil on canvas, circa 1912
20 x 24 in, 50.8 x 61 cm

ESTIMATE: \$125,000 – 175,000



James Wilson Morrice
Figures on a Beach

oil on panel, circa 1905 – 1906
4 7/8 x 6 in, 12.4 x 15.2 cm

ESTIMATE: \$30,000 – 40,000



Cornelius David Krieghoff
Crossing the Ice

oil on canvas, 1861
 14 ½ in diameter, 36.8 cm diameter
ESTIMATE: \$25,000 – 35,000



CATALOGUE SUBSCRIPTIONS

Delivered in Canada

ONE YEAR (four catalogues):
Fine Canadian Art/Post-War & Contemporary Art \$80
 TWO YEAR (eight catalogues):
Fine Canadian Art/Post-War & Contemporary Art \$130

Delivered to the United States and Overseas

ONE YEAR (four catalogues):
Fine Canadian Art/Post-War & Contemporary Art \$90
 TWO YEAR (eight catalogues):
Fine Canadian Art/Post-War & Contemporary Art \$150

ABONNEMENTS AU CATALOGUE

Livraison au Canada

UN AN (quatre catalogues): *Beaux-Arts Canadiens / Art d'Après-Guerre et Contemporain* 80 \$
 DEUX ANS (huit catalogues): *Beaux-Arts Canadiens / Art d'Après-Guerre et Contemporain* 130 \$

Livraison aux États-Unis et à l'étranger

UN AN (quatre catalogues): *Beaux-Arts Canadiens / Art d'Après-Guerre et Contemporain* 90 \$
 DEUX ANS (huit catalogues): *Beaux-Arts Canadiens / Art d'Après-Guerre et Contemporain* 150 \$

Veillez noter que le catalogue est en anglais.

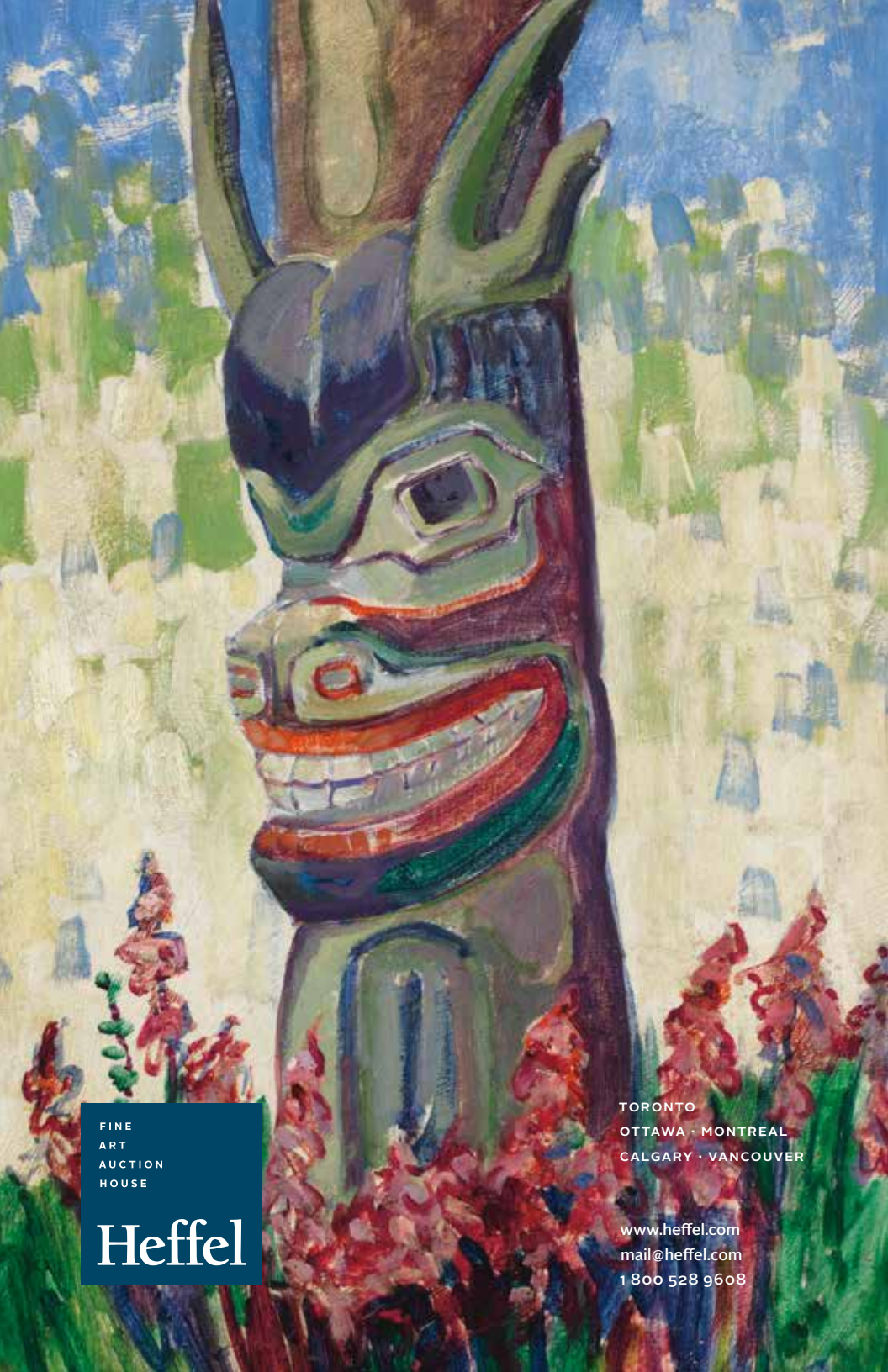
Follow us @HeffelAuction:



BACK COVER/COUVERTURE ARRIÈRE

Emily Carr
Maude Island Totem (detail)

oil on board, 1912
 25 ¾ x 12 ¾ in, 65.4 x 32.4 cm
ESTIMATE: \$400,000 – 600,000



FINE
ART
AUCTION
HOUSE

Heffel

TORONTO
OTTAWA · MONTREAL
CALGARY · VANCOUVER

www.heffel.com
mail@heffel.com
1 800 528 9608